



Homefields

INCORPORATED

ISSUE 40 • AUGUST 2017

HOMEFIELDS INCORPORATED
150 LETORT ROAD
P.O. BOX #41
MILLERSVILLE, PA 17551
WWW.HOMEFIELDS.ORG

FALL CLASSIC TOURNEY

FRIDAY, SEPTEMBER 22, 2017
CROSSGATES GOLF CLUB

REGISTRATION BEGINS AT 7:00 AM
SCRAMBLE FORMAT STARTS AT 8:30 AM

Breakfast, lunch, snacks, and drinks are provided as part of the \$80 registration fee for golf. As always, lots of prizes will be there for the claiming, and fellowship with old and new friends will be featured.



The opportunity to shine with your friends in Homefields' backyard, Crossgates Golf Club, will come again on September 22. Over the years, the planning committee has gone out of its way to keep our outings competitive, but lighthearted, creative, and interesting as well. You won't be disappointed in that regard this year. At the same time, we have done all we can over the years to keep the pace of play quick, stimulating, and rewarding. That only multiplies the fun.

It is our sponsors who contribute so generously and selflessly to making this day of golf to benefit Homefields possible and profitable. We welcome their support again this year, and we invite new sponsors at any level to join us. Information regarding sponsorship opportunities can be found at www.homefields.org. Questions about #21 may be directed to info@homefields.org.

—Terry Blue

Board of Directors

Thomas E. Strauss, Pres.
Allison G. Hawthorne, V.P.
Andy Hirschmann, Treasurer
Heather Conlon-Keller
Beth Herr
Bruce Sullenberger

Honorary Board

James Determan

Non-elect Members

Taryn Hogeland, Farm
Manager, Goodwill at
Homefields
Liz Snyder, Assistant
Program Director,
Community Services
Group
Tracy Beck, Office Manager

PICNIC IN THE FIELDS

SUNDAY, SEPTEMBER 24, 2017
HOMEFIELDS

PARKING AND GATE OPEN AT 10:30 AM
FUN LASTS FROM 11:00 AM UNTIL 3:00 PM

Ticket prices are the same as last year: Adults, \$25 in advance or \$30 at the door; Youth 13–17, \$10; Children 12 & under are Free.

Free off-street parking, accessible parking and drop off, accessible outdoor rest rooms. Seating options include shaded, bistro, hay bales, four tops, and share tables.

Picnic in the Fields is designed with you in mind—this fundraising event is for people of all kinds and ages. The **Kids' Tent** is more robust this year, with chalk art, take-home crafts, and games like “find the buried treasure” for children 5 and up. Adults will find much pleasant diversion as well, from live music to choices in libation, all within the bucolic campus of Homefields.

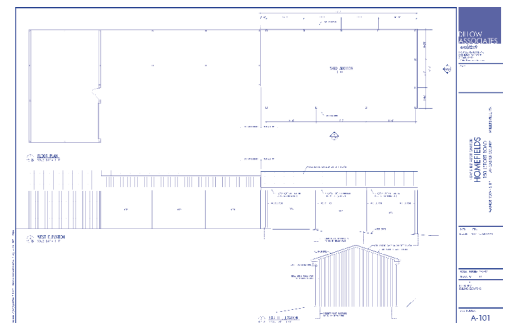
Returning favorites: picnic-style food from **Miller's** (with choices for carnivores and vegans), music by **Indian Summer Jars**, the beverage tent with local wine and beers, and a Silent Auction. Funds raised by this event help us maintain the land and buildings, purchase equipment and make repairs.

This year we expect to double the fun with more guests and an adult playground! We encourage you to buy your tickets now by visiting our homepage at www.homefields.org. Have a large group? Sponsor a table by contacting the office or emailing events@homefields.org. Questions? Please email events@homefields.org or call the office at 717.871.2012.

Interested in volunteering with us? Contact allison@homefields.org or call 717-871-2012.



Funds raised at these events help pay for equipment and indoor and outdoor maintenance. For example, this year we'll be extending our shed, to shield our tractors and heavy equipment from the elements.



THANKS TO OUR DONORS

SEPTEMBER 2016–MAY 2017

Robert & Jo Andrews
Steve Beck
Terry & Susan Blue
Bill Boyd—Brereton Manor
Linda Bradley
Michael K. Burnley
Robert B. Davis, Jr.
John & Lavon Harnish

Beth Herr
Robert & Gail Huff
Brian Hughes
Michael J. Galluppi
Bruce & Maureen Jackson
Joyce Electric
Hershey Groff, Jr.
Kettering Group
Richard & Barbara Kettering
William Kiehl

Lyet Family Trust
Don & Gail Mowery
Pauline Pittinger
Clarence Plummer &
ING Financial
Jesse C. Robinson
Mary Z. Stehman
John B. Stipe, Jr. &
Joan E. Stipe
Tom & Linda Strauss

Marcia Trach
Bradley & Julie Weaver
Joel & Kathleen Weaver
Kay A. Welty
William
Darrell E. Yoder (Elizabeth
R. Martin School)

PLEASE SEND CORRECTIONS TO:
INFO@HOMEFIELDS.ORG

In Memory of
Ronald E. Hawthorne
Michael & Elizabeth Baley
John & Lavon Harnish
Gail A. Hawthorne
Allison G. Hawthorne &
Carol J. Thompson
Kirk S. Hawthorne
Travis S. Luckenbaugh
Tom & Linda Strauss

NOTES FROM THE FIELD



This year we're celebrating the 17th season of the CSA program, and along the way we celebrated many milestones together. This year there are 7 farmer trainees growing your food: 6 are returning and 1 is new. This year we introduced a mushroom share from *Village Crest Farm* in Strasburg, and a coffee share sponsored by our own Bruce Sullenberger.

By the time this issue reaches you, we will have harvested late summer crops including watermelons, cantaloupes and peppers. Even under the hot summer sun, your farmers are thinking about fall. Shareholders can look forward to pumpkins, butternut squash, Indian corn, and root crops.

Unique experiences at our CSA include the pick your own (PYO) fields. Crops that are offered in the PYO fields are chosen because they are best fresh or may not be as popular as others. The PYO options include berries, hot peppers, cherry tomatoes, okra, concord grapes and cutting flowers.

Another distinctive feature at *Goodwill at Homefields Farm* is our practice of hosting other CSA farms. This year we welcomed returning farms **North Star Orchard**, **Hillacre's Pride** (cheese), and **Abendessen Bread**. Sign up for shares directly from the farms listed above, and pick up with your regular share.

Spread the word! We are now accepting mid-season shareholders at a pro-rated cost. This is a great opportunity to try out our CSA. We know schedules are busy, so we offer an option for members to "share a share," splitting the cost in half as you pick up every other week. Check out the FAQ page at www.yourgoodwill.org/grow/homefields-farm#tab-faqs

—Taryn Hogeland, Farm Manager

The official registration statement and financial information of Homefields may be obtained from the Pennsylvania Department of State by calling toll free, within Pennsylvania, 1 (800) 732-0999. Registration does not imply endorsement.



Not Taken for Granted

Grant Heilman, John Pittenger, Homefields, and willow trees... a

short list of the loves that reside in the heart of Pauline Pittenger.

When Pauline, an artist, educator, and retired farmer, was introduced to Homefields several years ago she discovered mission, purpose, and a physical property that harmonizes her ideals. She also found a majestic willow tree that had woefully outlived its lifespan. The tree had to be cut down.

Grant Heilman (1919–2014) was a noted photographer and book author of agricultural life and a close friend of Pauline's. Heilman's photographic stock agency in Lititz, Pennsylvania, where he lived for 30 years still bears his name and is the world's most notable source of agricultural photography. Best known of his books are *Farm Town* and *Farm*.

Before returning to Lancaster County, Pauline lived with her husband John Pittenger at Pittwillow Farm, Chester County where she tilled the land and raised livestock after retiring from Franklin and Marshall College.

Homefields is honored to have received this tree dedicated in memory of Grant Heilman, a man who spent his life photographing beautiful and powerful aspects of farm life.



ISSUE 40 • AUGUST 2017

Homefields Newsletter



Homefields
150 Letort Road
P.O. Box #41
Millersville, PA 17551

OUR RESIDENTIAL MISSION:
To create financially secure, long-term homes for adults with special needs in safe, family-like settings where there is respect for the individual in a holistic sense, and fun and creativity are revered, as basic human needs.

OUR VOCATIONAL MISSION:
To provide horticultural facilities for individuals who prosper with supported employment, to nurture integration through community interaction, and to cultivate a spirit of volunteerism within our community.

Non-Profit Org
U.S. Postage
PAID
Lancaster, PA
Permit # 587