



Homefields Incorporated
150 Letort Road
P.O. Box #41
Millersville, PA 17551
www.homefields.org

COMMUNITY SERVICES GROUP AT HOMEFIELDS



individual confidence and a sense of accomplishment that would not be found at your traditional day program. We have also seen some of our individuals be able to enhance their feelings of self esteem and community involvement by participating in a non segregated bowling league and becoming quite excellent bowlers. The relationships forged at events like this are ones that will last these individuals well into their adult lives. I find

that the environment at Homefields is particularly conducive to people being able to realize their absolute potential. From the sheer size of the property that the homes are located on, which literally allows everyone to have their own private space, to the beauty of both the homes and the pastoral, quiet environment, I feel just being at Homefields to be extremely therapeutic. When you couple this with the great team of staff members that have been assembled, it is definitely a recipe for success. I think that the support from the Homefields organization to the staff I supervise has been particularly vital in helping maintain such an experienced team. One of the staff working at the Stone House has been with CSG and Homefields for 10 straight years, ever since the home opened. That speaks volumes to the wonderful environment that is found at 152 and 154 Letort Road. As CSG and Homefields move into their next decade of partnership at Homefields, there are many exciting things planned. From expansions of the residential program to serve more individuals under the Homefields - CSG model, to continuing to fine tune each individuals plan to allow them to achieve their absolute fullest potential, there is always a lot going on. I am excited to be a part of all this, and continue to look forward to working for both Community Services Group and Homefields Incorporated.

—Mike Moyer
Assistant Program Director
Community Services Group



Board member Tom Strauss (left) discusses office renovation plans with architect Lynn Scott Paden.

They Will Come, Then You Build It

The effort to build an office began in January 2005 with Lynn Scott Paden, Paden de la Fuente llc, Lancaster; a friend of Homefields, produce shareholder, architect, community activist, and historic preservationist. Understanding that goals must be supported, Mr. Paden donated fourteen architectural drawings that will preserve the originality of two small, attached wooden buildings nestled between homes and fields and transform them into appropriate storage space and new office space for Homefields.

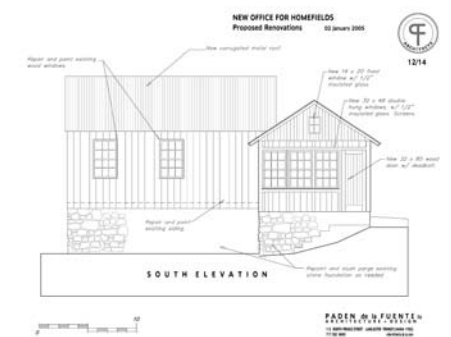
As is so often true in this wonderful county, one good deed led to another set of willing hands. Stepping forward without hesitation to help build a future came Sam Brenna-Timber Framer; Nabil Bouanane-Electical Service; DMM Woodworking-Cabinetry; K&K Painting-Painting; Paul Risk Associates-General Contractor; and Homefields' Volunteers who will do whatever is necessary to complete the tasks at hand. Buoyed by community support, our directors then applied for a grant of \$27,500 from the Lancaster County Community Foundation to purchase necessary materials and complete the office within one year.

On May 2, 2005, Mr. Doug Levering, Director of Programs and Initiatives, Lancaster County Community Foundation announced an award of \$14,000 to Homefields. This grant cycle was especially challenging as applicants exceeded available funds by \$1,300,000. Our

original estimate for material and labor totaled \$58,390 so we continue to need a few more extra helping hands.

Last year, the programs at Homefields in Millersville affected approximately 247 Lancaster County residents. Creating a corporate office will provide a space for our administrative volunteers, a central location for documents to be retained, and a physical presence on the property where we may meet you and share our goals for improving life for others with special needs.

If you have an interest, skills, or materials to donate to the office project,



please contact Linda Strauss (717) 291-1678 for a set of plans and a list of needed components. We will thank you for helping us to build, not just an office, but steps that will enable the people and programs at Homefields to reach the next level up.

Uncovering a Solid Foundation



I discovered the great work of Homefields over casual conversation at a party four springs ago. Since then I have come to know and respect the caring way they nurture their residents and coax the organic produce from our county's rich soil. Each fall, at the last pick up of the season, I say farewell to the simple enduring structures that silently support their mission. The modest connected utility shed between the barn and house is my favorite. It has certainly seen better years, yet it ages with grace and with dignity.

As its windows exhibit decay and the siding peels, most people would surmise it is not long for this world and has served its purpose. Yet, inside the timber frame remains strong and serviceable as it rests firmly on a solid stone foundation. All this building needs is for someone to look past its outer appearance and see the potential inside. Not what we think it is, but what we know it can be. That has always been what Homefields is about.

—L. Scott Paden, RA
Paden de la Fuente, Architects

Lancaster County Community Foundation



Doug Levering, Director of Programs and Initiatives, Lancaster County Community Foundation and Christian R. Herr, Jr., President, Homefields



The Lancaster County Community Foundation uses grant resources to support responses to emerging community needs, and to strengthen the capabilities of non-profit organizations to operate effectively.

Established in 1924 by prominent residents, the Community Foundation is committed to supporting programs and projects that promote, sustain, and advance the quality of life in Lancaster County through impactful grant making to charitable causes.

Any charitable organization that is exempt from federal income taxes under section 501(c)(3) of the Internal Revenue Code and that serves the people of Lancaster County may apply for grant funds.



Exchange of Mints for Mint

Employees of the Fulton Bank, Lancaster's McGovern Office Branch, wanted to show that they valued our business. Being sweet bankers, they coined a delicious way to chip in through a candy bar sale. Spearheaded by Mr. Patrick Henry, Branch Officer, information about our missions was posted on an interior bulletin board and drive-through customers were given an opportunity to donate in return for a candy bar of their choice.

Homefields' Directors are grateful to the McGovern Office Branch employees for their extra effort and all the drive-through customer sweethearts. A check of \$360 was presented to Christian R. Herr, Jr., the President of Homefields, in December.

E is for Elias Alexander David Ham

Many charming moments were shared at the ranch house this year as full-time staff member Megan Ham planned for the birth of her first baby.

Elias Alexander David Ham was born on March 14, weighed 8 lbs. 2 oz., and was 21 inches long. Residents Ted, Lisa, and Mary Beth will become familiar with the joy of baby visits as Megan returned to Homefields' residential in June.



"A Home of Their Own" Update

Homefields is once again on the threshold of change. Hopeful rumors of new funding for expansion of residential programs have been circulating recently. Families of adults with mental retardation are understandably excited, although final amounts have not yet been established. "A home of their own" may at last be more than a dream for those on waiting lists. We will keep you posted as we seek a third and perhaps a fourth home to purchase. The founders and volunteers at Homefields are anxious to meet our potential new

residents and their families. We welcome your energy and enthusiasm and will work beside you to make your loved ones comfortable in their new environment.

Unseen Intricacies of Nature



Farmer Trainee Eric Rooney in the field.

Now that spring is upon us, we can safely reflect on snow... snow? Snow is just one of several ways that nature provides for the growth of our vegetables, fruits and all other plants by providing nitrogen.

"Is Miracle-Gro also the official sponsor of snow this year?" you might ask. No, long referred to as poor man's fertilizer, snow "fixes" nitrogen from the atmosphere as it forms and falls, bringing nitrogen to the soil in a usable form for plants. It is thought that about a pound per acre falls per year, which on a global scale is impressive. Of all the elements that are necessary, nitrogen is the most critical, being responsible for the green growth.

Have you ever noticed how vibrant plants look after a thunderstorm? There is good reason for that, as lightning is another natural phenomenon which aids our plants by collecting atmospheric nitrogen for them. According to Dr. Pud Franzblau, over a billion tons of nitrogen-fixed compounds are generated by lightning each year. The ammonia-like smell that is present after a storm bears witness to the occurrence of this process.

Without lightning, plants would not be able to grow and all life would cease to exist over time.

A third way that nature provides us with nitrogen for growing tasty tomatoes, watermelon and other crops is via legumes. Less dramatic than the weather-derived nitrogen but no less remarkable is the nitrogen fixing that occurs when leguminous plants such as the clover that grows in your backyard, soybeans in the neighbor's field, or some rows of peas right here at Homefields actually harvest the nitrogen from the air and store it in nodules on their root systems. This process goes on in nature even without any human intervention and works very well here on the farm when we intentionally plant nitrogen-fixers such as vetch, peas, beans or clovers among others. These crops are later tilled into the soil and the nitrogen is readily available for plants to get growing.

—Scott Breneman,
Assistant Farm Manager

Conestoga Club Donates Earth Day Proceeds

Raindrops and fundraising are recurring themes this spring and maybe appropriate for the 2005 Earth Day Festival brought to Millersville University by The Conestoga Club. Club members pitched tents and pitched in on April 30 to celebrate the day and donate all proceeds to Homefields.

The Conestoga Club's primary purpose is to promote ecological and environmental education with a specific focus on the Conestoga River. Each year the club holds an Earth Day Festival at Millersville University and donates all proceeds from the day to an environmentally friendly organization. This year Club President, Rick Carr, class of '05, learned about Homefields on the Internet even though we are located only 1 1/2 miles west of the university. He was excited by all he read on www.homefields.org and the fact that we are neighbors. Rick said he thought our non-profit did everything right.

The event included "Pie Your Favorite Professor", hair cutting, music, food and refreshment stands, flower planting, and a Homefields display. The Conestoga Club raised \$250.00 and created lasting community connections.



Chris Herr (Homefields' President), Kay Welty, and Tom Strauss (board member) staff the booth.



◀ A student debates a finer point with use of a cream pie.



▲ Chris Herr proudly accepts donation jar from Joseph Habaker (Vice President of Conestoga Club) and Rick Carr (President).

Dinner Out for Homefields

Join Us
DINNER OUT for
home fields
Home of a residential and vocational program for adults with disabilities, located in Millersville, PA
On MONDAY MARCH 28 from 4-10 P.M.
this restaurant will donate 10% of its proceeds to Homefields. We encourage you to come back on the 28th and bring friends, knowing that you're doing so much more.
Sponsored by Scheid Produce Inc.

Spring showers added to the pleasure of stepping out on Monday, March 28 from 4-10 p.m. as friends joined together to dine out and participate in Homefields' most recent annual fundraiser, Dinner Out for Homefields.

El Serrano, Columbia Ave., Lancaster; George Street Café, N. George St., Millersville; and Molly's Pub, E. Chestnut St., Lancaster donated 10% of their food revenue from the

evening. Scheid Produce, Letort Rd, Millersville contributed as an event sponsor. Money raised during the event was used to help purchase new equipment for the vocational program, Goodwill at Homefields Farm. Please see related story.

Thank you to our friends and neighbors who found Dinner Out for Homefields to be a delicious way to give as well as receive. If you would like to add a restaurant or a sponsorship name to the list of participants for March 2006, please contact Cindy Ledwith (717) 872-1762 or Homefields (717) 872-2012, info@homefields.org. This is a standing invitation to all our readers to save your appetites and join in the good cheer next year.

Cindy Ledwith, Board Director, Homefields and Peter Emerson, Farm Manager, Goodwill at Homefields' Farm organized this first annual event. David Strauss, Communications Designer, and William Moshos, Marketing Director, TES, Inc. collaborated in the concept and design of the printed material.



NEW TOOLS FOR THE TRADE

In January 2005, Peter Emerson, Farm Manager, Goodwill at Homefields Farm, presented a list of equipment necessities to Homefields' Property Committee. Needed by March was the following:

- Water Wheel Transplanter (pull type): \$2,100
 - 60-inch Flail Mower for a Ford Tractor: \$3,800
 - Quick-Hitch Assembly for Two Tractors: \$400
 - Thinner/Cultivator: \$1,100
- Some equipment cost less, some a little more.

Homefields directors upheld the requests and also purchased two new power lawn mowers for the trainees. These purchases were made possible through your support of Homefields fundraisers and additional donations.

Donations

October 2004 – June 2005

IN-KIND

*Dutch Haven
Dino
Lancaster Let's Go!
Harley-Davidson raffle ad
William Moshos, TES, Inc.
Raffle ticket design and "Dinner Out" support
Justin Nolt
Property Committee volunteer service and support
Paul Risk Associates
Scaffolding
Plain & Fancy Farm
Dino
*Scott Paden, RA, Paden de la Fuente Architects
Architectural drawings for office, \$5,000 value
Mike Sahd
Property committee volunteer service and support
Miller's Smorgasbord Dino
Doug Scarlett Property committee volunteer service and support
*Scott Sheely Workforce Investment Board—Room for retreat
Carolyn Semedo-Strauss Orientation Packet and Golf Sponsorship Guide
Reed Semedo-Strauss—Web Design
David Strauss—Print Design
Willow Valley Restaurant—Dino

GRANT

The Lancaster County Community Foundation—\$14,000

\$10,000–\$5,000

Dorothy L. Lyet

\$100–\$499

*Harris and Janet Baderak
Barry Bruce & Company—Barry Bruce
*Conestoga Club
Dennis Dougherty
*Jane Shipe Dunlop
*Fulton Bank, McGovern Avenue Branch
*Lynn and George Markert
*Molly's Operating Corporation (Molly's Pub)
Frank Sahd Salvage Center, Inc.
*Michael E. Sahd
William and Joyce Smedley
Saint Mark's United Methodist Church
Scheid Produce Inc.
Linda Strauss
*Robert "Tack" Trostle
*Vladi Enterprises, Inc. (El Serrano)
*Kay A. Welty
*Kenneth E. and Susan M. Wile

\$10–\$99

Donald and Tracy Arndt
Joel D. Ember
*George Street Café

Mrs. Christina R. Coates
Cindy L. Ledwith
*William and Judith L. Koenig
Paden de la Fuente, Architects
Charles J. Pletcher
James and Sharon Roberts
*Pfizer Foundation
*Rachel Simon
*A. Tamasin Sterner
*Anne and Jim Thomas
*Manon B. Yeager

SPECIAL THANK YOU

The Lancaster County Office of Mental Health and Mental Retardation
Millersville University
Office of Community Service
Paul Risk Associates, Inc.
TES, Inc

and to Sam Brenna, Nabil Bouanane, DMM Woodworking, K&K Painting, and Don Arnt, Fabral Roofing, for promising to donate their skills and materials to our office construction project.

*Indicates new donor or new level of giving

Golf... Ganse... Giving... Gator... Gratitude



I was preparing for Homefields' 2004 annual golf tournament. We had exciting news! A new venue, Crossgates in Millersville, and a new date. Contributors from last year would want to know this.

One of my contacts was Gerry Ganse of Ganse Apothecary in Lancaster, who had been a lunch sponsor last year. The Ganse men are avid golfers and are always up for a good time on the links. Along with the golf tournament information, I gave Gerry a copy of the June 2004 issue of *Susquehanna Style* magazine with the feature article: *A Magical Place*, by Daina Savage. The article explained in detail Homefields' successful partnership with Goodwill Industries, the many adults with special needs that are given the opportunity of work, the happy residents enjoying a full life, and the community able to partake in the delicious organic produce and fresh flowers.

Suzanne and Gerry Ganse wanted to do more. "Does Homefields have a wish list?" Suzanne asked me. The need to transport people and produce over the farm's 13 acres was high on that list. Peter Emerson, Homefields' farm manager, was able to provide specific needs and desires for that transportation. So the Ganses and Peter went off looking for the proper piece of equipment. The John Deere 'Gator' proved to be the perfect solution. Little did they know my nephew, Shawn Dougherty, a recipient of Homefields

generosity, is a number one fan of John Deere. Everyone was excited!

How do you get from golfing to giving? Suzanne and Gerry explained their intentions. "Everyone is called to give. Every gift is important." As parents and community leaders, they feel a desire and responsibility to set an example and are interested in the welfare of others. The Ganse Family is attracted to fulfilling basic human needs and providing dignity for the individual. They understand Homefields' mission. Homefields had a specific need, the request was made, and they were able to purposefully direct their gift. By giving and changing the world they also receive thanks in so many unexpected ways. "Seeing the smiling faces of Homefields' clients" is just one example.

It is with gratitude, awe and responsibility I put my efforts into development for Homefields. Thank you to the Ganses and all our contributors! I am amazed at the generosity of so many people. I feel a huge sense of responsibility to follow through with the wishes of all donors. It's the growing season at Homefields and your gifts are making it happen.

—Denise Ziegler



Dressed for the Nines

Dust off that Louie Vuitton steamer trunk, give your Burke Golfrite mashie niblick a swing, and watch the Wood Milne Brambles roll. Once you've fine-tuned your stance by reading anew *Rights and Wrongs of Golf* by Bob Jones, then you may soitenly join our fashionable argyle-sporty golfers at Crossgates Golf Course in Millersville. Curly says, "You'd better do something fast"!

Mark your calendar for **Homefields' 9th Annual Fall Classic**, Crossgates Golf Club, Millersville, PA. (717) 872-4500, www.crossgatesgolf.com

- Friday, September 23, 2005
- Noon, shotgun start
- \$75 to play (included lunch, open driving range, and dinner)
- Registration and driving range open at 9:30
- Lunch 11:00–11:45
- Dinner and prizes at 5:00

Theme: "Dressed for the Nines"
Hole-In-One Prize: 30-Month lease of a Porsche Boxster from Autohaus, Lancaster
Dinner by Plain & Fancy Farm

For sponsorship opportunities and information or golfer registration, please go to www.homefields.org, email info@homefields.org, or call Denise Ziegler at (717) 872-8950.



Win a Harley-Davidson, Help Homefields Along the Road

XLH 883 CUSTOM SPORTSTER®
(Include usual info)
Drawing held February 11, 2006
Buy additional tickets at: www.homefields.org

Testimony from a previous winner:
Hello... I'm your 1999 winner!!! I just wanted to say that I still have my Sportster. I love riding it and telling my story about how I won it. I'm glad to see others have followed in my footsteps and claimed their bike. It was my 9 year old son that insisted I but the ticket and when I saw the cause it supported I was glad to comply with his request. People still think I'm kidding them when I tell them I won it! Thanks again for all the wonderful memories I've made while riding around with my son. He can't wait till he can ride it alone. Good luck and here's to your continued success!

Thank you,
—R. Stinger



Raffle and Donations

forms also available online at www.homefields.org

Yes, I'd like to help Homefields with my tax-deductible contribution:
___ \$25 ___ \$50 ___ \$100 ___ Other

Please send me ___ tickets for the Harley-Davidson raffle at \$5 each.

Total enclosed \$ _____

Your Information:

Name _____

Address _____

City _____ State _____ Zip _____

Telephone _____

email address _____

Method of Payment:

Check MasterCard Visa Discover/Novus American Express

Card # _____ Exp. Date ____/____

Signature _____

- PLEASE ADD ME TO YOUR MAILING LIST
 PLEASE REMOVE ME FROM YOUR MAILING LIST

Recipe:

Green Tea Granita with Ginger and Citrus

½ cup water
3 bags green tea
1 tablespoon minced fresh ginger
1 cup fresh orange juice
¼ teaspoon freshly grated orange
zest
2 tablespoons fresh lemon juice
¼ teaspoon freshly grated lemon
zest
3 tablespoons honey, or to taste
Pinch salt

1. Heat water to nearly boiling. Steep tea bags in hot water for 2 minutes. Discard bags and let tea cool.
2. Press minced ginger through a clean garlic press, catching ginger juice in a medium bowl. Discard remaining ginger solids.
3. Add cooled tea and remaining ingredients to ginger juice; stir. Adjust sweetness if necessary. Pour mixture into an 8 x 8-inch shallow pan and place in freezer. Fluff ingredients with a fork every 30 minutes or until the mixture is icy and fluffy, about 2½ hours.

Serves 4–6

This sweet treat is packed with immune-enhancing green tea, oranges, lemons, and ginger. And it's a great way to soothe a day throat. For kids, try making it with decaffeinated tea and freezing the mixture in Popsicle molds.

Homefields Is Coming Home

Endorsing Homefields' goals and missions, Community Services Group and Goodwill Industries meet with us as partners in Millersville. Together we define the residential and vocational programs at 150–154 Letort Road. Caregivers, through Community Services Group, provide a quality of life for the residents who live in our homes which are highly regarded and valued by all concerned. Management and trainee farmers, through Goodwill Industries of Southeastern PA, continue to develop an organic vocational farm program that is a jewel in Goodwill's international crown and a real asset to our multifaceted community. Homefields' volunteers work daily to bring these life options to people who have disabilities. We provide homes, vocational infrastructure, assets and a setting that is enriching for all. But come to the property that is "Homefields" and you have a better chance of finding Waldo than you do of finding a Homefields representative.

So where is Homefields? Board members, who are responsible for all corporate business, work out of their individual homes and are scattered over a 20-mile radius. Founding members and current directors take great satisfaction in reviewing the accomplishments that are apparent at Homefields property today but continuing to conduct business without a central location is becoming untenable. However, if you look very closely at the small red century-old timber frame building centrally located between the residential stone house and the vocational yellow barn, you begin to see the future shape of an office and storage space for Homefields... a home for Homefields.

Eat Organic, Be Healthy, Savor Flavor, Save Polly



Season—June until late November,
pick-up weekly.

\$550—Full share, full season (\$21/week)

\$350—Half share, full season
(\$14/week).

So, do you love celery and are tired of hearing that you and your family may also be eating Dicloran, Acephate, and Oxmyl or 26 other chemicals? Did your parrot forget the way back to the cage because you were offering Polly contaminated imported green peppers as food? Or have you simply forgotten that unbelievable flavor and nourishing value of fresh produce grown organically and harvested just for you? Well, come in from the storm and be confident about food safety and taste by purchasing your organically grown produce through the accessible Goodwill at Homefields Farm vocational program. Help yourself and your parrot while helping people who have a disability to work and thrive.

Send a check along with name,
address, and phone number to:

Peter Emerson, Farm Manager
Goodwill at Homefields' Farm
150 Letort Road
Millersville, PA 17551
(717) 871-3110
petere@lancastergoodwill.org

Homefields Mission Statements

RESIDENTIAL

To create financially secure, long-term homes in safe, family-like settings where there is respect for the individual in a holistic sense, and fun and creativity are revered as basic human needs.

VO-

CATIONAL

To provide agricultural/horticultural facilities for individuals who prosper with supported employment, to nurture integration through community interaction, and to cultivate a spirit of volunteerism within our community.

Board of Directors

Christian R. Herr, Jr., *President*
Joyce Scout Smedley, *Vice President*
Dennis Dougherty, *Treasurer*
Linda Strauss, *Secretary*
Leon Bixler
Allison G. Hawthorne
Cindy Ledwith
Dorothy L. Lyet
Thomas E. Strauss
Denise Ziegler

Non-Profit Organ.
U.S. Postage
PAID
Lancaster, PA
Permit No. 1928

Homefields
150 Letort Road
P.O. Box #41
Millersville, PA 17551



HOMEFIELDS' NEWSLETTER • ISSUE EIGHTEEN • JULY 2005

