

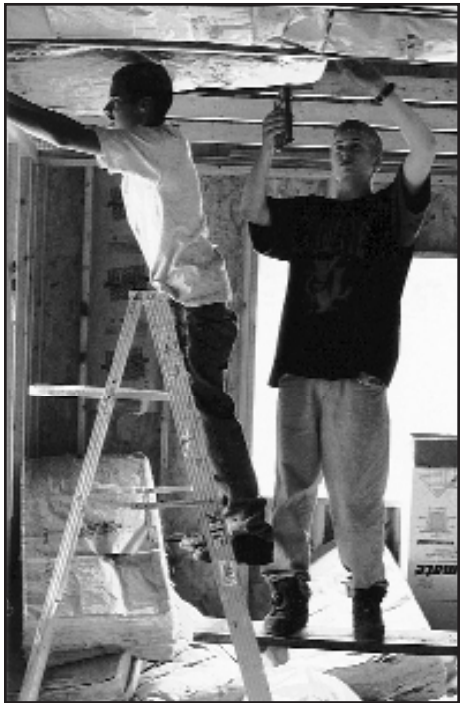


# home fields

## COMMUNITY CORNER

The **Private Industry Council** hosted three local teenagers who came to Homefields over the summer. For six weeks, **Josh Wolf, Jimmy Sanchez,** and **Louis Bolorin** did everything from install a picket fence to sand the clapboards of the old summer kitchen. Their handiwork can be seen everywhere, and we were certainly glad to have them.

■ Thank you to the employees of **Thomas E. Strauss, Inc.** who selected Homefields as their sponsor through the annual United Way Drive. They donated a total of \$5,144.00.



Jimmy Sanchez (on ladder) and Josh Wolf prepare the ranch house for drywalling.



If this button caught your eye, you should see the barn! It's the first thing you'll see at Homefields, and the folks from the **First United Methodist Church** in Millersville are responsible for its distinct pigmentation. Led by reverend **James Garner** and **Greg Henderson**, a group of about 25 members donated two of their weekends to paint it, and they threw in a new bird feeder for good measure.

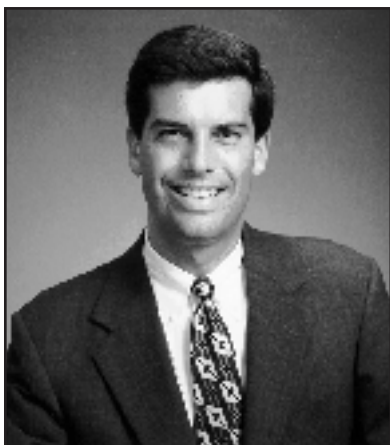
■ **Roy Drew** of **OHMEDA**, a New Jersey firm, donated \$7,839 worth of office furniture to our day program. This included file cabinets, chairs, and a 14' oak conference table.

■ We are remiss for not having already thanked **Dotty Lownes** and **Allison Hawthorne** for their work in our garden. If all goes well, they will be redesigning the garden to bear vegetables appropriate for future cooking classes, to take place in the ranch house. □

## A LAWYER WITH COMPASSION

Developmental disabilities affect more than the person challenged. Disability remains a quiet phenomenon despite the fact that everybody knows someone who is autistic, or has cerebral palsy, or is schizophrenic, and we carry this familiarity with us; it is part of what makes us human.

Tim Brown—known in his trade as A. Timothy P. Brown, Esq.—has been with Homefields from its inception, leading us through legal quandaries. As a member of **Barley, Snyder, Senft & Cohen**, Tim pulled



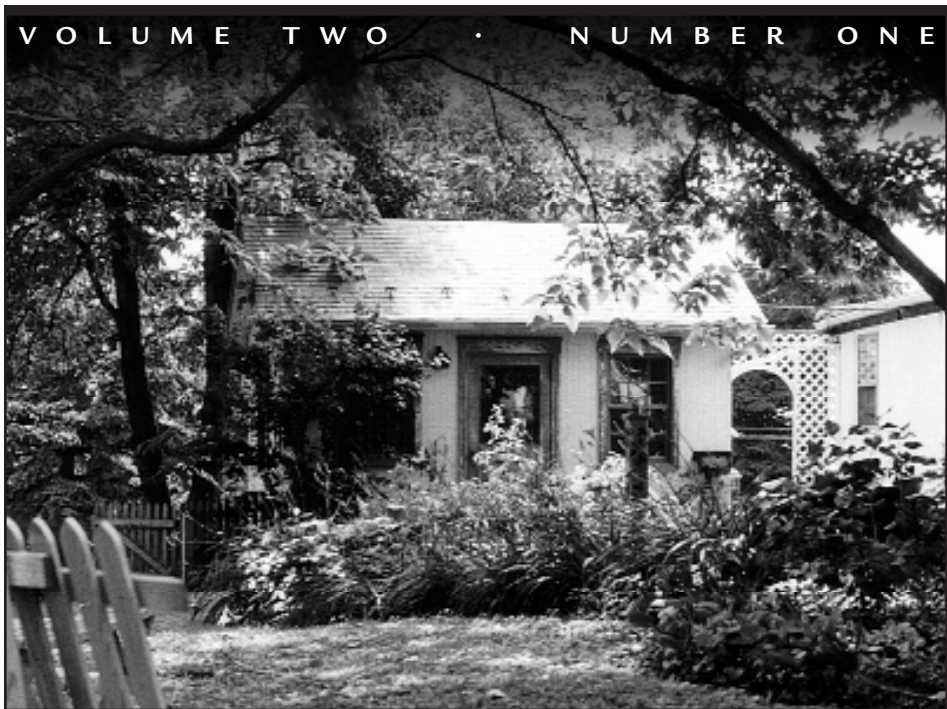
together our governing documents and secured our non-profit status. He has performed this work pro bono for, in his words, "the satisfaction of being a lawyer is in helping a worthwhile cause."

Tim grew up in Lancaster and lived in Washington D.C. before returning five years ago. His personal interest in Homefields partly began with his friend's sister, Theresa, born with

Down's Syndrome. Tim's and Theresa's families grew up together. Theresa, the youngest of eight children, was the one who could light up a room and she touched everyone she came in contact

with. When she was only 17, her mother came down with a terminal illness and she was distressed with how to provide for Theresa after her death. However, Theresa had a weak heart, as many people with Down's Syndrome have, and she suffered a fatal heart attack while getting off the school bus one day. This tragedy gave her mother peace of mind and she too died, one week later.

Fortunately for us, Tim has the desire to help create peace of mind for other families. He found an opportunity with Homefields, and we are grateful for having him with us. The legal profession should be grateful for having him as a role model as well. □



Nestled behind all that foliage is the old summer kitchen, which will become a wood-working shop in a future iteration.

## UP & RUNNING

by THOMAS STRAUSS

If it seems like you haven't heard from us in a while, it's because we've been hammering nails instead of typewriter keys. For those of you who haven't heard, Homefields is now in full operation. Our inauguration was a three-day open house that featured a tour by the **Arc of Pennsylvania** (formerly the *Association for Retarded Citizens*) and—despite the rain—introduced over 150 people to Homefields.

However that already seems like years ago, and now that the residences are in place, we are focusing on the vocational day program. This is the next big phase, and it will bring surrounding communities' programs to Homefields. Homefields Incorporated will act as the landlord, providing facilities and maintaining the land for all interested providers and consumers in Lancaster County.



**Tom Swallwell**, the Vocational Services Director of Goodwill Services of Lancaster, is spearheading the Day Program Committee, chaired by Stefan Latshaw. We are fortunate to have someone with Tom's drive and experience, and are excited about the potential that the day program has for broadening the horizons of many individuals who have limited options. The enclosed blueprint illustrates areas of Homefields that need to be developed for the vocational program to take shape: the greenhouses, vegetable and flower plots, orchards, pastures, and row crops.

Foremost is erecting the greenhouse—which came to Homefields through the **Lancaster County Foundation Grant**—and renovating the barn, which will house offices and facilities for day workers when inclement weather keeps them from working the fields. The substructure for the greenhouse is on site, but a potting shed must first be built to support these components. Excluding the cost of an A.D.A.-approved bathroom, the masonry potting shed will cost about \$39,200 to build.

The barn, painted earlier in the summer (see story, top left) must be winterized and have office and toilet facilities installed. **Chris Dawson**, of Hammel Associates Architects in Lancaster, has provided us with a blueprint for these renovations, which amount to about \$91,000.

Since it's the dead of winter, it may seem premature to be working on programs that will take place outside. However, when the spring thaw comes, we want to hit the ground running.

The next volume of this newsletter will let you know how we've done and what's left to do. □

## Wish List

Experienced volunteers will find creative outlets on Homefields' campus. Don't be shy—we're great to work with and you'll quickly reap the fruits of your labor! Drop us a note detailing your interests and experience, and how you can be contacted when your skills can best be utilized. If you can't afford the time, then consider a monetary contribution. It's tax-deductible, and here's a concrete list of what your funds will go toward:

- A photocopier has been graciously donated to Homefields, but it needs a \$900 overhaul.
- We'll need "seed" money for trees, plants, and garden equipment because what would a farm be without these things?
- We're always improving some corner of Homefields, and thus need funds for construction material. Of immediate concern are the potting shed and barn rehabilitation.



Mark Wolgemuth wanted to purchase a five-dollar raffle ticket but only had a ten-dollar bill. He ended up buying two, and it was the second one that won him the Harley.

Resident **Brian Bixler** draws winning ticket (above). **Martha Bixler** (far right), Homefields' secretary, calls Mark to give him the good news. Shown with Mark is **Bruce Terreson** of Classic Harley-Davidson of Reading, who provided us with the bike.



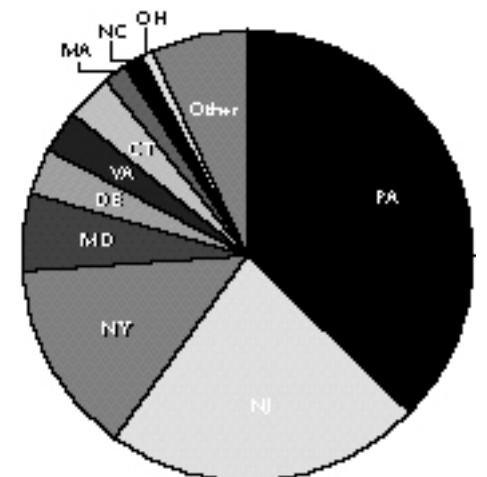
# SPORTSTER RAFFLED AT HOMEFIELDS

One of the mundane challenges every organization faces is fund raising. It's mercenary, it's labor intensive, but it's critical to our maintenance and growth. While it may be easier to link Homefields with a larger institution (and thus be funded by it), this option might influence our autonomy.

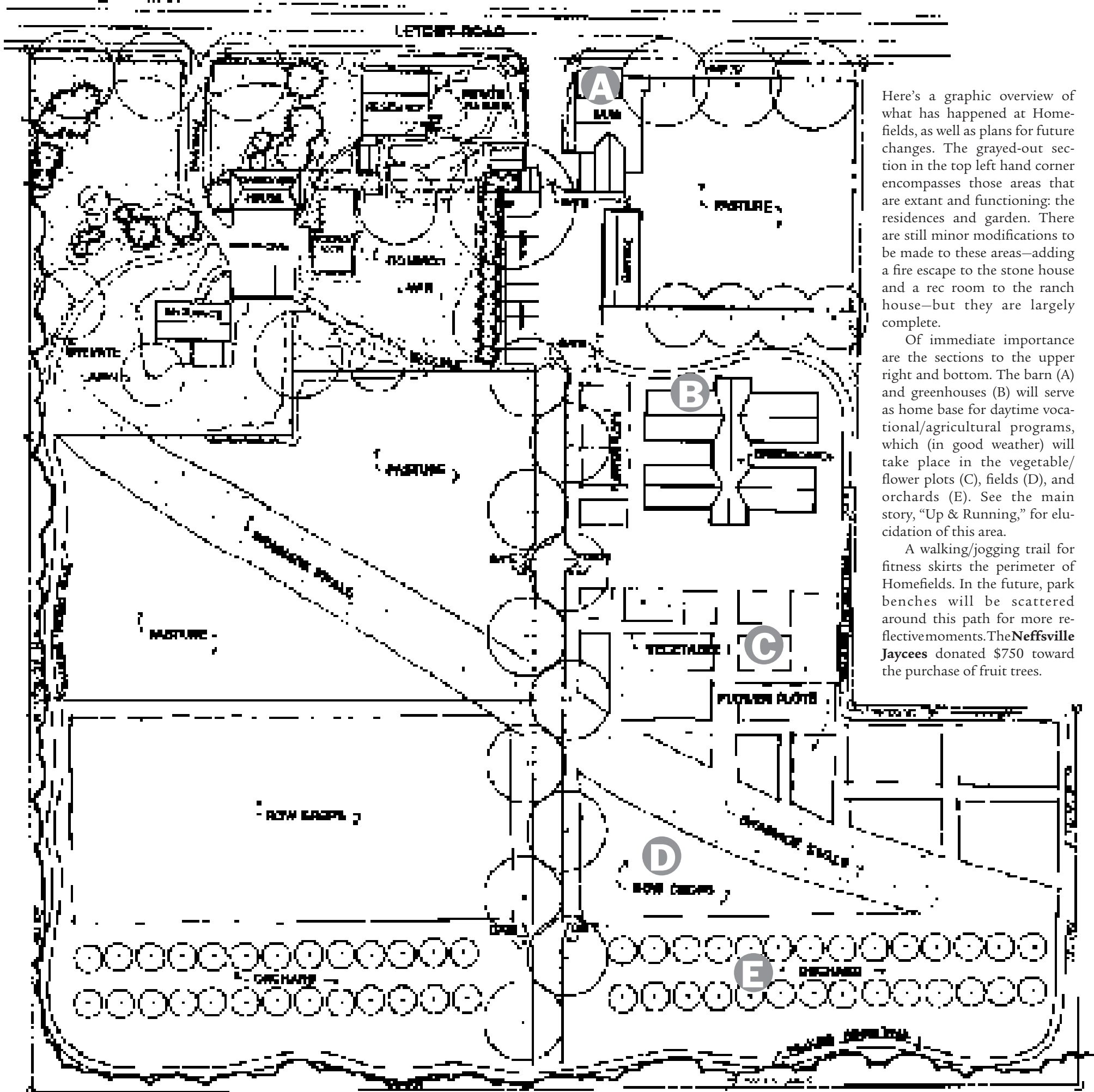
Our first big attempt at fund raising was to raffle off a metallic red, 1995 Harley-Davidson Sportster 883, shown above with Mark Wolgemuth, its new owner. Mark intended to buy one ticket and only had a ten-dollar bill, so he decided to buy two. It was the second one that got him the bike. The drawing was in Homefields' ranch house on December 16, and was attended by about 75 people.

Mark is selling his prize to buy a much-needed car, but (fortunately for him), we're already working on the next raffle. A red 1996 Harley (same model) will be delivered to Homefields about the time that you read this, in preparation for the next drawing which will take place on or about July 4th. We figured this is an appropriate date for an American motorcycle. Only time will tell if lightning strikes twice, Mark.

Five dollar raffle tickets were sold by individuals as well as at **Wavelengths** in downtown Lancaster, **Gast Classic Motorcars** in Strasburg, and **Miller's Smorgasbord** in Ronks. In total, 3,846 tickets were sold, with regional breakdowns as follows:



People from 39 states and four countries bought tickets, from as far away as Hawaii, Canada, Norway, Germany, and Holland. Thirty-seven percent of the total sales came from Pennsylvania, with New Jersey and New York combining for another 37%.



Here's a graphic overview of what has happened at Homefields, as well as plans for future changes. The grayed-out section in the top left hand corner encompasses those areas that are extant and functioning: the residences and garden. There are still minor modifications to be made to these areas—adding a fire escape to the stone house and a rec room to the ranch house—but they are largely complete.

Of immediate importance are the sections to the upper right and bottom. The barn (A) and greenhouses (B) will serve as home base for daytime vocational/agricultural programs, which (in good weather) will take place in the vegetable/flower plots (C), fields (D), and orchards (E). See the main story, "Up & Running," for elucidation of this area.

A walking/jogging trail for fitness skirts the perimeter of Homefields. In the future, park benches will be scattered around this path for more reflective moments. The Neffsville Jaycees donated \$750 toward the purchase of fruit trees.

## A BLUEPRINT FOR THE FUTURE



The above plan was provided by **Jim Wenger** from Derck and Edson Associates, a local landscape architecture and civil engineering firm. Jim grew up in Lancaster County, in a farming community. He's been with

Derck and Edson for ten years, and wanted to work with Homefields because it preserves a homestead and maintains the character of Lancaster County. □



Here are estimated costs of construction for the potting shed...

- Basic building budget for an office, a break room, potting area, and A.D.A.-approved bathroom. **\$39,200**
- Septic system. **5,000**
- Electric and water services. **4,000**
- Site work, which includes stone and grading. **2,800**

**Total for potting shed: \$51,000**

...and here are estimated costs of construction for the greenhouses:

- Materials, including polycarbonate windows, doors, propane heaters, and benches. **\$10,000**
- Interior concrete walkways. **3,800**
- Installation of utilities, including propane, electricity, and water. **2,200**
- Labor to assemble greenhouses and benches. **2,000**
- Drip and irrigation tubing. **1,000**

**Total for greenhouses: \$19,000**

**GRAND TOTAL: \$70,000**



# 883 HUGGER

If you haven't read about our first Harley-Davidson raffle yet, the juicy details are inside. We wanted to show you what's in store for the second drawing. Shown above is the same model motorcycle being delivered to Homefields; a **1996 XLH Sportster 883 Hugger**. It's metallic red with optional laced wheels, as shown. It has a "peanut" gas tank, pullback handlebars, an 883cc V-twin engine, five-speed transmission, and staggered shorty dual exhaust pipes. Tickets are still \$5 each.